

# Sustainable Development Goals

## Goal 11: Sustainable cities and communities



Goal 11 is about making cities and human settlements inclusive, safe, resilient and sustainable. Today, more than half the world's population live in cities. By 2050, an estimated 7 out of 10 people will likely live in urban areas. Cities are drivers of economic growth and contribute more than 80 per cent of global GDP.

### **What are some of the most pressing challenges that cities face today?**

Inequality and the levels of urban energy consumption and pollution are some of the challenges. Cities occupy just 3 per cent of the Earth's land, but account for 60-80 per cent of energy consumption and 75 per cent of carbon emissions. Many cities are also more vulnerable to climate change and natural disasters due to their high concentration of people and location so building urban resilience is crucial to avoid human, social and economic losses

### **Why should I care?**

All these issues will eventually affect every citizen. Inequality can lead to unrest and insecurity, pollution deteriorates everyone's health and affects workers' productivity and therefore the economy, and natural disasters have the potential to disrupt everyone's lifestyles.

### **What can I do to help achieve this goal?**

Take an active interest in the governance and management of your city. Advocate for the kind of city you believe you need. Develop a vision for your building, street, and neighbourhood, and act on that vision. Are there enough jobs? Can your children walk to school safely? Can you walk with your family at night? How far is the nearest public transport? What's the air quality like? What are your shared public spaces like? The better the conditions you create in your community, the greater the effect on quality of life.



Challenges

The **RAPID** and often **UNPLANNED URBANIZATION** witnessed worldwide has led to **INCREASED PRESSURE ON THE ENVIRONMENT**



Solutions

**PROMOTE SOUND URBAN PLANNING**, sustainable building, low-carbon transports, green spaces and sustainable lifestyles



Our cities account for up to **80% OF ENERGY CONSUMPTION** as well as **75% OF GLOBAL WASTE AND CARBON EMISSIONS**



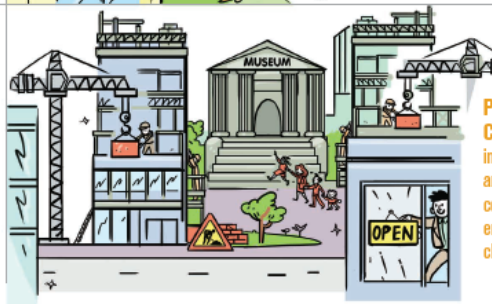
**INVEST IN RENEWABLE ENERGY**, waste management, sustainable and green infrastructure



Due to the high concentration of people, infrastructure, housing and economic activities, **CITIES ARE PARTICULARLY VULNERABLE** to climate change and natural disasters



**PROTECT CITIES** - which are important social, cultural and economic centres - from environmental and climate threats



[https://wedocs.unep.org/bitstream/handle/20.500.11822/22746/11\\_Sustainable%20cities%20and%20communities\\_FINAL.pdf?sequence=1&isAllowed=y](https://wedocs.unep.org/bitstream/handle/20.500.11822/22746/11_Sustainable%20cities%20and%20communities_FINAL.pdf?sequence=1&isAllowed=y)

References:

[https://www.un.org/sustainabledevelopment/wp-content/uploads/2019/07/11\\_Why-It-Matters-2020.pdf](https://www.un.org/sustainabledevelopment/wp-content/uploads/2019/07/11_Why-It-Matters-2020.pdf)

<https://www.un.org/sustainabledevelopment/cities/>

<https://www.unep.org/explore-topics/sustainable-development-goals/why-do-sustainable-development-goals-matter/goal-11>

